



The next generation
of **PC audiometry** has arrived

MADSEN Conera

Data management **Hearing assessment** Fitting & Testing Balance assessment



Welcome to Network Audiometry

When we introduced the world's first microprocessor-based clinical audiometer back in 1982, it was a true technological breakthrough. Later, we brought out the world's first commercially available audio-logical PC software. And now the full-featured MADSEN Conera brings PC audiometry into the age of networking.

These days, virtually all computers are networked. So it was natural to create a PC audiometer that could also communicate with other devices both within and outside the clinic. After all, that's what "state-of-the-art" is all about.



But networking means more than just shoving electronic data down a wire – it's also about communicating with other people.

Get information where it's needed

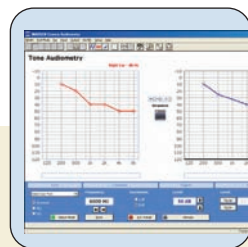
On many audiometers, test results are printed on strips of flimsy thermal paper or some other dedicated printer. If you need to add these results to a patient's journal, you can either attach a photocopy or pull out your pen. And if you need to get the data to someone outside the clinic, you head for the fax or the mailbox.

If we say Adobe® PDF, Microsoft® Office, and XML data export, you can probably already see where MADSEN Conera can take you! Conera makes it easy to create customized electronic documents – *or even send data directly to*

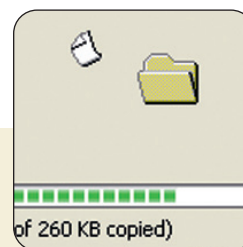
electronic journals and records. And it's just as easy to pass on test results to health-insurance organizations, hearing instrument dispensers, or other healthcare professionals as secure e-mail attachments, which saves both time and money. Still need an old-fashioned printed copy? Just click "Print" and your customized report will come out on your own office printer on your own paper.

Intelligent workflow

By eliminating the need to manually copy or retype data into journals and other documents, we've done more than just eliminate a major waste of time. We've also helped make sure records won't be corrupted by errors and there's less chance of losing a document. In short, we help you concentrate on what you do best by simplifying and streamlining your workflow.



Intuitive interface
Clear menus and icons mean that Conera is as easy to use as it is efficient.



Paperless patient records
Test results can be incorporated into virtually any electronic document, including customized Adobe PDF files, for easy electronic transfer.



More efficient workflow
Conera lets you spend less time filing and keeping records and more time with your patients.



MAKING NETWORKING HUMAN

Audiological test results are merely the means to an end – they're not the end themselves. That means information must be shared with other experts. The faster this can be accomplished, the faster patients can receive the help they need. What's more, faster communication can also mean faster reimbursement from health-insurance providers.

Streamline your examinations

Beneath MADSEN Conera's sleek exterior, you'll find a full-featured clinical audiometer built to the industry's highest standards, including complete two-channel tone audiometry in HL or SPL. MADSEN Conera also offers a wide range of special tests including SISI, Stenger, ABLB, Weber, Rinne, and Hughson-Westlake Auto Threshold screening, plus loudness scaling. But that's only part of the Conera story.

The touch-screen advantage

Audiologists do a lot of walking. Most of it is between the audiometer and the examination booth. Set up the test. Make adjustments. Check again. Make another adjustment. Back and forth. Again

and again. Sound familiar? Well, here's a simple solution.

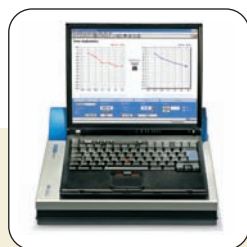
In addition to the normal PC monitor, Conera lets you install a touch-screen display in the examination booth. That means you have full control of Conera from both within the booth and at your desk. Patients experience smoother, more personal examinations and you save time.

Outstanding visualization

Conera makes it possible to superimpose high-resolution color audiograms or display them separately – left/right or right/left. This makes it significantly easier to interpret test results since the data is displayed in a useful

and intuitive manner – a vast improvement on most stand-alone audiometers.

The audiograms, test data, and patient data can all be combined into a customized document, which can be printed or electronically distributed. In fact, these reports can be specially configured so they contain different information for different recipients. Perhaps best of all, the examination results can be exported in XML – a universally recognized data format. This means, the results can be easily incorporated into an electronic patient journal or Microsoft Office document, even by people with limited computer skills.



Use with any PC

You can use the Conera with any desktop or laptop computer – including touch-screen displays.



Hang it on the wall

Who says the audiometer needs to take up valuable desk space? Conera can be placed virtually anywhere.



Connect multiple screens

Add a supplemental touch-screen display in the examination room for full control of Conera and other PC-based applications.

Digital word lists

XML data export

USB connectivity

Customized reports

Sleek, integrated cable cover

Binaural SPL audiometry

Electronic reporting

Distributed access to patient records via PC networks



MADSEN Conera is based on well-proven software and hardware platforms from GN Otometrics.



Easy data transfer

Send standard XML data directly to Electronic Patient Journals. Or create customized reports in Adobe PDF format for printing or distribution.



Integrate with other instruments

Conera is 100% NOAH3 compatible, so it can communicate directly with many other audiometric devices.

Optimize your workflow

Combine more efficient examination routines with MADSEN Conera's electronic reporting, and the total time savings can be significant, which benefits both your practice and your patients. Higher patient throughput, without sacrificing examination quality, means better economy. And more effective workflow helps you provide better service by offering more examination slots to shorten waiting lists. And there are other benefits, too.

Paperless journals

We'll probably never have the "paperless" offices that were promoted back when the PC first made its debut. But there's no doubt that the ability to store, retrieve, and share electronic files has made our world a lot more efficient.

The truth is, the physical handling of examination reports and patient journals can keep an administrative assistant busy much of the day. But with electronic files, there's nothing to photocopy, nothing to retype, and nothing to get

lost. That means everyone can use their time more effectively, reporting is more efficient, and health-insurance reimbursements arrive faster. When did you last see a traditional stand-alone audiometer that could deliver this kind of return on investment?

The importance of accuracy

In the traditional worst-case scenario, a paper report ends up in the wrong file, under the wrong name, and the patient thus receives the wrong treatment. Customized electronic



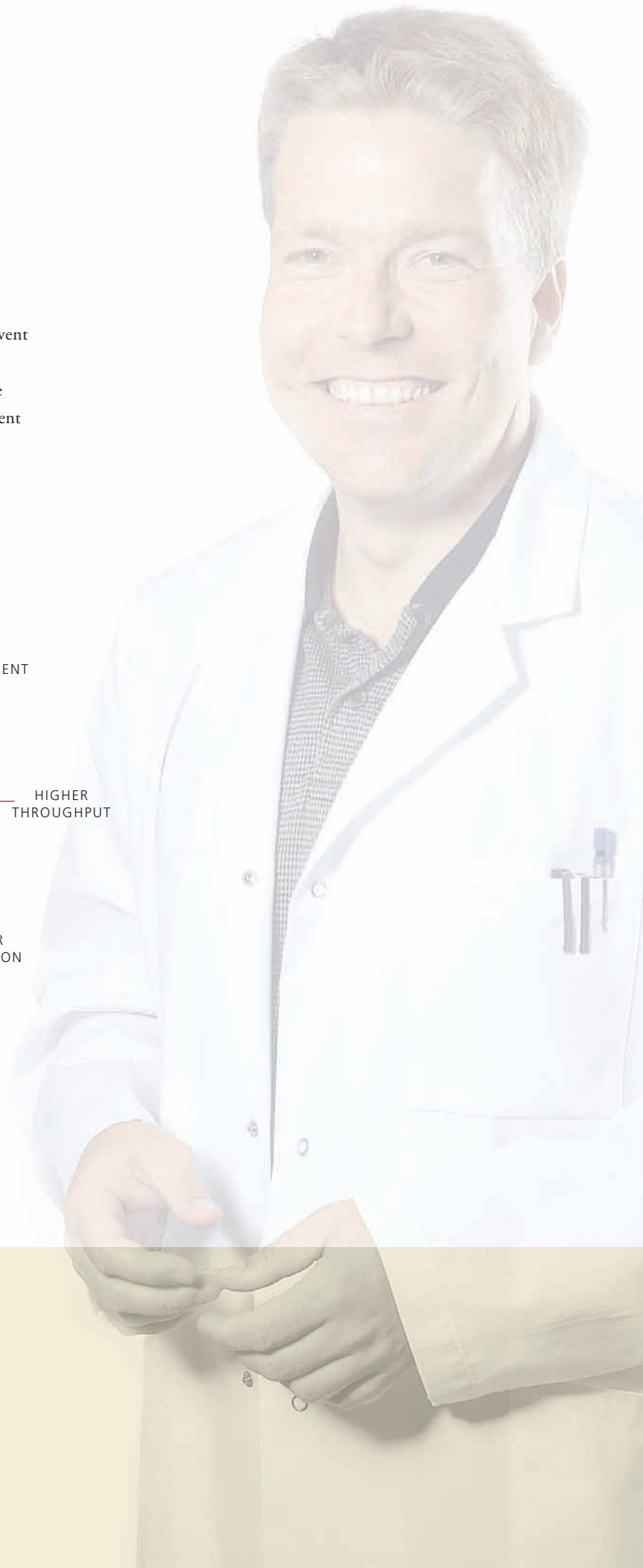
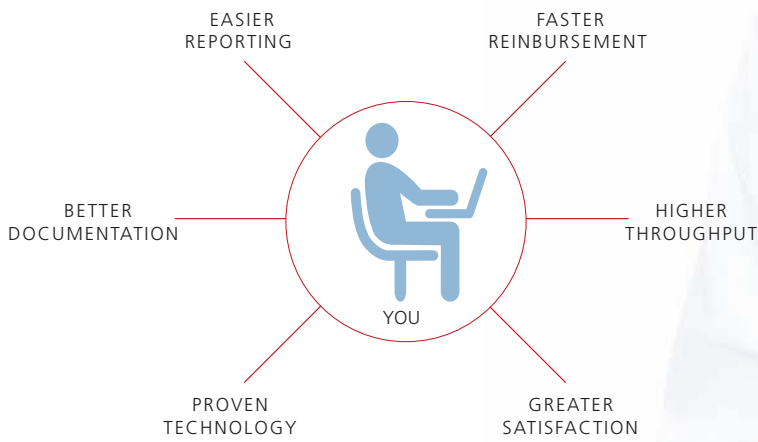
MORE TIME FOR YOUR PATIENTS

Throughout this brochure, we've talked about efficient workflow, streamlined examinations, and saving time. But that doesn't mean assembly-line examinations. Rather, it allows you to spend more time counseling your patients and putting them at ease – even though your total throughput has actually increased.

files featuring personal patient data can significantly minimize this risk. Moreover, these files provide full documentation of all the tests that were performed. In other words, there can never be any doubt as to whether a test was conducted and what it indicated. Al-

though Conera cannot prevent medical malpractice, it can certainly help protect those audiologists who are innocent of any wrongdoing.

Now that you've heard about Conera, we hope we'll be hearing from you!



Features

Technical specifications

- Channels:** two separate and identical channels
- Reporting:** configurable reports for paper reports or electronic reports using Abode® PDF or data sharing via XML
- Masking:** contralateral, ipsilateral, or binaural; white noise, speech noise, NBN, or external (CD/tape)
- Outputs:** air (phones or insert phones), bone, free-field (via external amplifier and speakers); probe for SPL audiometry
- Levels:** -10 to 130 dB in 1 or 5 dB steps (maximum output is limited by transducer capability)
- Tone Mode:** standard frequencies in range 125 - 8,000 Hz
- Stimuli:** pure, warble, and pulsed tones, NBN, NBN masking
- Tone switch:** manual, or 1.5 sec. tone duration
- Speech Mode:** stimulus via microphone or CD/tape 1-2 with speech-noise masking. Word counter and automatic calculation of score in %. Optional CD-ROM control enables automatic presentation of speech materials from CD
- Patient:** talkover, talkback, and monitoring; assistant monitoring earphone;
- Communication:** patient responder with indicator on PC screen
- Accuracy:** frequency: better than ± 0.05%
- Level:** electrical ± 0.5 dB; acoustical ± 3 dB
- Power Supply:** AC 50/60 Hz, 100 V - 240 V
- Dimensions:** 38 x 35 x 7.3 cm, 15" x 13¼" x 3" (W x D x H)
- Weight:** 3.3 kg, 7¼ lbs
- Approvals:** CE-marked according to the Medical Devices Directive 93/42/EEC

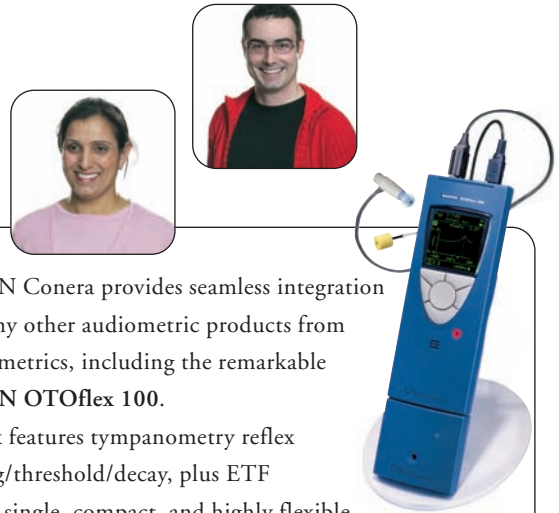
Accessories

- Audiometer Control Panel (ACP)
- Overlay for ACP
- CD-ROM control-module license and cable (does not include solution CD)
- Insert masking phone
- Sound booth installation kit
- Free-field loudspeaker set (2 speakers)
- PA 210, power amplifier
- Microphone with table stand, mini DIN
- Carrying case with wheels

GN Otometrics is the world's leading manufacturer of hearing and balance assessment instrumentation and software. Our extensive product portfolio ranges from infant screening applications, audiologic diagnostics and office management software, to balance testing and hearing instrument fitting.

As an organization, we are committed to developing innovative, integrated solutions that help healthcare professionals make the best possible decisions. This, in turn, helps our customers improve the overall standard of patient care wherever they are located.

Headquartered in Copenhagen, Denmark, and with a center of development in the United States, we maintain a global network of distributors and subsidiaries. GN Otometrics is part of GN Store Nord.



MADSEN Conera provides seamless integration with many other audiometric products from GN Otometrics, including the remarkable MADSEN OTOflex 100. OTOflex features tympanometry reflex screening/threshold/decay, plus ETF – all in a single, compact, and highly flexible unit. Hang it on the wall, set it on your desk, or even put it in your pocket, you'll always have everything you need close at hand. **Find out more at www.gnotometrics.com**

Distributor:

- Data management
- Hearing assessment
- Fitting & Testing
- Balance assessment

GN Otometrics, Denmark. +45 72 111 555. info@gnotometrics.dk
 GN Otometrics, North America. 1-800-289-2150. sales@gnotometrics.com
www.gnotometrics.com

